



WEB GIS BROWSER FOR ROAD TRAFFIC MANAGEMENT

Through the integration of mobile mapping systems data, GIS and data bases, an easy-to-use system for high quality road traffic management has been created, containing a large amount of data and requiring no special knowledge or training.

The system uses integrated data obtained by stereo panorama cameras, laser profilers and GPR recordings of road pavement and underground utility lines.

This comprehensive software solution provides the following output data:

- Road pavement condition (longitudinal and transverse road evenness, cracks, ruts, visual deformations, milepost marks...)
- Traffic signalisation (horizontal and vertical traffic signals, traffic signs, traffic lights, traffic direction signs...)
- Road equipment
- Road structures (bridges, viaducts, culverts, tunnels, cycle lanes...)
- Utilities (shafts and the position of overhead and subsurface utility lines)



Figure 1: A cartographic display

The data is shown using official coordinates with the position accurateness of under 5 cm, and the final cartographic display is based on:

- Cadastral plans
- Orthophoto images
- Topographic maps
- other base data depending on the individual user's choice

The cloud storage enables simple data access from any computer with an internet connection by using just a username and a password.

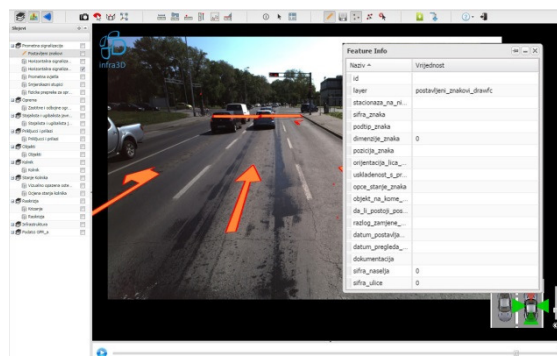


Figure 2: A video with a related database

Other possible features and benefits of the system are:

- Vectorisation and storage of existing data in a number of different database file formats (.dxf, .xls, .csv, .shp) and classification and categorisation of data by using attributes (such as sign codes, signal dimensions, installation dates...)
- Possible integration of data from other sources (tables, designs, permits, photos...)
- Possible queries, analyses and creation of reports based on the data stored
- Graphic and tabular display printouts in different formats (A0, A1, A2, A3, A4)
- Performing measurements within and across the video frame using 2D or 3D coordinates
- Tailor-made system upgrades